

FBL Quilting

& Crafts

NEW CRAFT STUDIO IN HARLOW Opens 13-Jan-18 10-4pm

Classes in 2018 will take place at the new FBL Quilting and Craft Studio, Unit 12 Greenways Business Centre, Harlow Business Park, ESSEX, CM19 5QE. There is ample free parking and designated disabled parking. There will be free PAT testing available for students sewing equipment and a mini make and take workshop.

The following list is just a taste of the classes that will be available in the coming months. Most classes are suitable for beginners, but please ask if you are unsure. Whilst most students will bring their own sewing machines, I do have some sewing machines and an over locker for students to borrow in class.

If you have a request or idea then please do let Becky know as soon as possible. 07957-551898 (phone or text, but please remember to add your name to the text!!) or preferably email becky.preen@ntlworld.com.

www.fblquiltingandcrafts.co.uk

About me...



My name is Becky Preen and I am 43 years old. I have been using a sewing machine since the age of 10 when my mother first began to teach me to make clothes. I continued to sew and after a short break during my university science degree, I became an avid patch worker. I have completed over 200 quilts in a variety of techniques. Many of these quilts have been auctioned or raffled for charity.

Since 2003, I have taught in shops and at local quilting groups in Hertfordshire, Essex, Kent & Somerset. From 2008-2017, I have also been teaching for Essex County Council, Adult community Learning, teaching Jewellery making and dressmaking as well

as patchwork and quilting. I have, and continue to thoroughly enjoy inspiring my students and have revelled in their successes as their confidence and skills grow. I have already completed my City and Guilds Certificate in Stitched Textiles (P & Q) and hope to finish my diploma in 2018.

Here are some of the exciting things coming soon! If you are interested in a course that doesn't have specific dates, or you want something not listed, please let me know so I can add you to an interested list, so I can make arrangements to suit the most peoples' availability. If you don't see what you would like to learn please let me know. I have a second more comprehensive list of classes available if you require it.

I am now able to accept Credit cards for class and sales payments. I am afraid there are no age or benefit related concessions, but classes booked and paid for in full at least one month before the day class or 2 months before the start of the weekly courses will attract a 10% discount. (NB: For Jan 2018 starts this discount is valid up until 14th December 2017 for the weekly courses starting in Jan)

Tea and coffee is provided free during all classes, but please bring your own mug and lunch for full day classes, or you can visit the centres lovely cafe to buy something.

General Courses/ Classes Timetable

(please check the calendar for specific dates and times and details of special courses)

Day	Morning	Afternoon	Evening
Monday			
Tuesday	Day a month courses		Patchwork Night Owls (suitable for all) (7-9:30pm)
Wednesday	Patchwork (Established group) 2½ hours	Patchwork (new group beginners and improvers) 2½ hours	Dressmaking Projects (7-9:30pm) 10 weeks
Thursday	Short courses such as introduction to dressmaking and getting to know your over locker or sewing machine see calendar at www.fblquiltingandcrafts.co.uk for details.		Introduction to Dressmaking and Evening Getting to know your sewing Machine courses
Friday	Jewellery Making Beginners and improvers		
Saturday	One Day Workshops & Saturday day a month courses		

Dressmaking & General Sewing

**Getting to know your Over locker (2 days) Saturdays 17th & 24th Feb 2018 10-4pm
(can also be arranged for 4 sessions of 2.5 hours) £60/ £54**

Do you have an over locker that sits in its box because you are too scared to use it? Then this is the course for you. I'll help you make friends with your over locker, learn how to thread it without stress and use it to do far more than just trim and neaten edges. You will need to have your own over locker for this course.

- ❖ Over locking/ serging
- ❖ Suitable for beginners to the over locker.



**Getting to know your Sewing Machine. (2 sessions of 2½ hours) Thurs eve 7pm-9:30pm
(can also be arranged as 1 day) £30/£27**

This course will take you through the basics of how to use your sewing machine. Not got it out of the box? Don't know how to thread it up? Wind a bobbin? Adjust the tension? This is the course for you. You will need to be able to bring your own sewing machine to class.

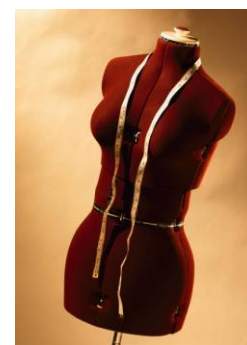
- ❖ Suitable for absolute beginners who have not used a sewing machine before or those wanting to spend the day playing with their machine and finding out what it can do.



**Introduction to Dressmaking (3 sessions of 3 hours) Thursday evenings 7-10pm
25th Jan, 1st Feb & 7th Feb. £54/£48.60**

These three classes will take you through the basics of pattern selection, choosing what size pattern to make and reading all that incomprehensible information on the outside of a commercial pattern. We take an easy to make commercial pattern and work through the steps to prepare, layout, mark and cut. We will cover simple adjustments needed before starting to cut out a toile (test garment). This course is designed specifically for people who have no experience in dressmaking or have been muddling through with commercial patterns. I require students to have attended this or one of my 8-10 week dressmaking classes in the past before attending the dressmaking projects courses. Once you have the basics you can join the dressmaking projects classes at any time to complete your garment.

- ❖ Suitable for absolute beginners to dressmaking.



Dressmaking Courses & Workshops

**50's Full Pleated Skirts (suitable for border prints) One Day 10-Feb-18 10-4pm
£30/£27**

The full skirts of the 50's were either based on circles or used box pleats at the waist to gather in lengths of fabric onto a waistband. This technique is best suited to border print fabrics. Side opening with a pocket or back opening. A simple skirt to make with stunning results.

- ❖ Machine sewing
- ❖ Suitable for beginners used to using a sewing machine.



**Rockabilly Circle Skirts (50's "poodle" Skirts) One Day 10-Mar-18 10-4pm
£30/£27**

Draft your own pattern for a stunning full circle skirt, attach waist band and hem. You can stop right there or add a fun appliqué for an authentic 50's look. The skirt works well in polka dots, stripes or checks if left unembellished. If you are adding a dog or cat appliqué, strong plains are the way to go. Optional pockets.

- ❖ Machine sewing including appliqué
- ❖ Suitable for beginners used to using a sewing machine.

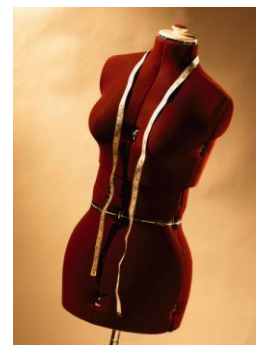


a

**Dressmaking Projects (10 sessions of 2.5 hours) Wednesday Evening 7-9:30pm
Starts 17-Jan-18 £150/£135**

These classes are intended for those students who have done dressmaking courses with me before or who have already attended an introduction course. These sessions run in a workshop style where you work on your project with my support. They are in ten week blocks and class size may be limited to ensure each person has enough space to work. This is where we will construct garments and work on fitting and other specific finishing techniques.

- ❖ Suitable for all levels who have attended an introduction to dressmaking course.
- ❖ Students joining this group from the introduction classes in the same term only pay for the remaining 7 weeks.(£105/£94.50)



Patchwork & Quilting Courses

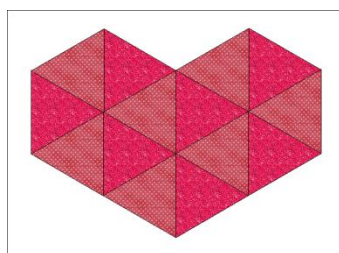
Patchwork Courses (10 sessions of 2.5 hours)	Starts	
16-Jan-18	Tuesday Evening 7-9:30pm	£150/£135
17-Jan-18	Wednesday Morning 10-12:30pm (This session is full)	£150/£135
17-Jan-18	Wednesday Afternoon 1:30-4pm (Places available)	£150/£135

These classes are weekly sessions booked in termly blocks of 10 weeks. Dates will be notified at time of booking. Class projects vary from course to course and students can also bring their own projects to work on if the class project does not appeal to them. The proposed project for January is Tulips, this lovely quilt uses peeled back edges to create easy curves and simple fabric folding for the stamens.

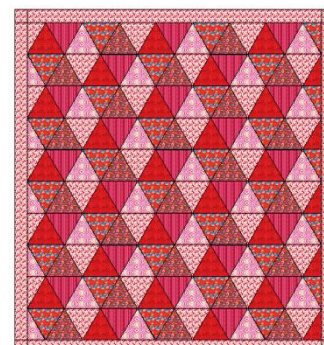


- ❖ Suitable for all levels unless specified in the calendar
- ❖ Complete beginners can join this course and discuss suitable projects.

Equilateral Triangles Heart Mug Rugs (or quilt) One Day	Saturday 03-Feb-18	£30/£27
--	---------------------------	----------------



This quilt pattern uses equilateral triangles (60 degrees) to form heart shapes which can be made up as valentine mug rugs. Alternatively you can make up a whole quilt with the triangles. Cutting can either be done using a 60 degree triangle ruler or the marks on your normal $24\frac{1}{2} \times 6\frac{1}{2}$ ruler. Both techniques will be demonstrated.



Both techniques will be demonstrated.

- ❖ Machine sewing.
- ❖ You need to be familiar with rotary cutting strips

Faux Log Cabin	One Day	Saturday 03-Mar-18	£30/£27
-----------------------	----------------	---------------------------	----------------

This quilt pattern uses the light and dark aspect of log cabin without the strips. It is made using squares and can be made from ten or more different fabrics, making it great for using up scraps. The square quilt, you need 360 squares plus yardage of your background fabric which will be cut into strips. The starting size of your squares determines to the finished size of your quilt. The twin version is rectangular so you need 480 squares. This quilt pattern can also be strip pieced which will be demonstrated.



- ❖ Machine sewing

Patchwork & Quilting Courses

Double Dutch Pinwheel Stars	One Day (TBA)	£30/£27
------------------------------------	----------------------	----------------

These large 18" blocks are simple to piece and you only need a few to make a decent sized quilt or one for a cushion cover. The centre square is constructed from "off cuts" made during piecing the other units. There are several design variations possible, but it's a nice easy project that grows quickly and uses fat quarters.

- ❖ Rotary Cutting and Machine piecing. Suitable for absolute beginners.



Jewel Box Quilt	5 weeks (2½hours) (TBA)	£75/£67.50
------------------------	--------------------------------	-------------------

This quilt uses a variety of fabrics (at least 10 colours) along with a unifying background to create a jewel like glow. You can either use charm squares (pre-cut 5" squares) or cut what you need from scraps or yardage you already have. The finish size is about 45" square. Suitable for beginners and improvers.

- ❖ Machine sewing



Sudoku -Appliqué / Quilt	One Day (TBA)	£30/£27
---------------------------------	----------------------	----------------

Use a solved Sudoku puzzle as the basis for making a cushion cover or other sized quilt. Smaller projects are layer cake, jelly roll and fat quarter friendly. This is a raw edge appliqué/quilting technique which makes a fast and fun top ready for binding, making into a cushion cover or as a panel for a tote bag.

- ❖ Machine stitching, rotary cutting



Tessellating Pinwheels	One Day (TBA)	£30/£27
-------------------------------	----------------------	----------------

After sewing a simple grid of squares, students use an offset template to cut a further series of squares which when rotated a few degrees can be sewn back together to give this stunning interlocking pattern of pinwheels. All the seams are straight and it's easy to keep track of the blocks.



- ❖ Rotary Cutting, Machine Piecing. Suitable for beginners

Jewellery Making

Basic Jewellery Making & Beadwork.

5 weeks (2½hours)

£75/£67.50

Getting started making your own jewellery this class is designed for absolute beginners. Half the battle in jewellery making is knowing what everything is called, so I will show the students a huge range of findings and tools and then show the class how to use some simple components to make some stunning jewellery. Loops, crimps and basic stringing on beading and Memory Wire will be covered.



I have an extensive catalogue of jewellery making sessions available, please ask for details.

Follow on and more advanced classes in all subjects are also available. Please enquire for details.

Class fees are per person and do not include materials. For most classes you will be required to bring your own sewing machine and/or over locker. All electrical items will need to be PAT tested before use but this can be done at class if needed. It would be helpful if students could arrange to bring items in before the first class if possible to minimise disruption. You can also bring them to an open day or the launch date.

Please let Becky know as soon as possible if you are intending to attend a class.

Day class bookings- A non refundable deposit of £10 holds your space. The discount will be applied to the balance if paid at least a month before the class. If you have to cancel within one month of the class in addition to the deposit I am afraid I may also have to charge the remaining full cost of the class. Unfortunately I have had several people cancel either on the day or at very short notice in recent months making the classes unviable.

Looking forward to 2018 I am looking for input for what classes and workshops you would like to see.

If you have a request or idea then please do let Becky know as soon as possible. 07957-551898 (phone or text, but please remember to add your name to the text!!) or preferably email becky.preen@ntlworld.com.

www.fblquiltingandcrafts.co.uk